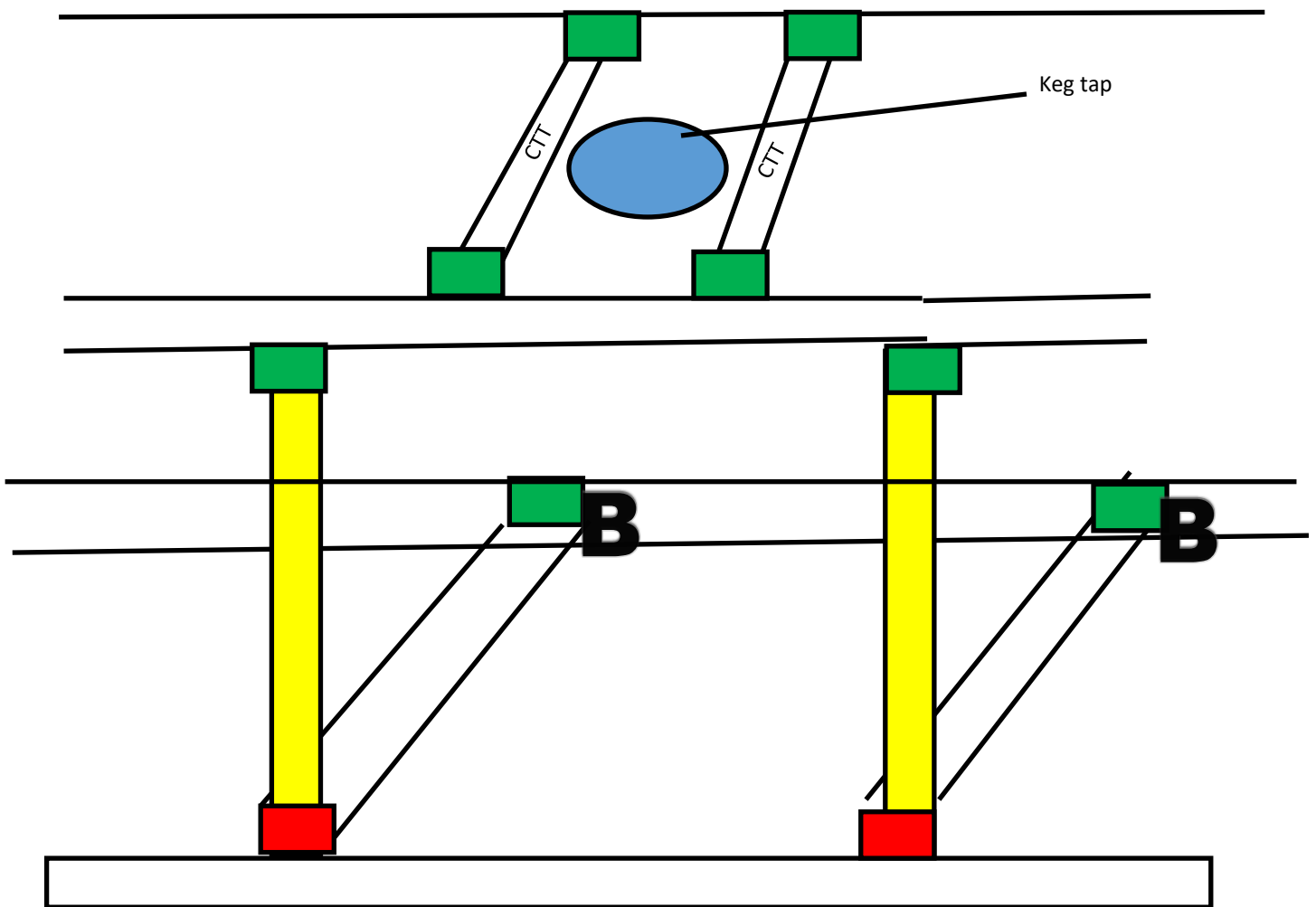


BBQ Tubes keg Cutout

PARTS 2 each 3 ways	4 each CTT	4 each 1 ways
Used at bottom		

NOTES: use the 2 VT vertical tubes from the front of the module for the right and left sides of fridge.

Use the 2 one way connectors from the module (not the cutout kit) to hold the rear CTT figure B



- Vertical Tube
- 4 ft Tube cut 2 fit
- 3 way corner
- 1 way